

The American Theatre

Technical Specifications

As of 09-06-17

The American Theatre in Hampton, Virginia

The American Theatre
125 East Mellen Street
Hampton, Virginia 23663
Phone: (757) 722-2787
Fax: (757) 727-1621

Interim Director: Terri Vander Vennet (757) 896-1246
tvandervennet@hampton.gov

Artistic Director: Richard Parison (757) 896-240
richard.parison@hampton.gov

Assistant Director: Kevin Spence (757) 896-1231
kwspence@hampton.gov

Production Manager: Richard Best (757) 722-2787
richard.best@hampton.gov

Box Office Manager: Bessie Crotts (757) 896-1245
bcrotts@hampton.gov

Concessions Manager: Matt Shufflebarger (757) 896- 1232
mfshufflebarger@hampton.gov

Finance Mgr. Payables: Carleen Cameron (757) 896 1234
carleen.cameron@hampton.gov

Volunteer/ Guest Services: Kevin Spence (757) 722-2787
kwspence@hampton.gov

The American Theatre in Hampton, Virginia

Rental and Technical Information

The American Theatre is a historic, fully ADA-compliant facility that features:

A 388 seat proscenium-style main hall, with 1 balcony

3 large lobbies with 2 Concession Stands

A Lecture Hall with screen/projection, a CCTV feed from the main hall and a sound system

A Dance Studio with sprung wooden floor, black Marley available, dance barres, full-wall mirrors and a dedicated sound system

Audio feed from the main hall throughout the entire front of house

Williams Sound Assisted Listening Device System available at the Box Office

2 ample load-in spaces from our driveways at ground/ stage level, 1 stage right and 1 stage left

1 large Green Room

1 small Green Room with kitchen

2 Star Dressing Rooms with individual bathrooms, 1 with a shower

2 large Chorus Dressing Rooms with individual bathrooms and showers

A small laundry room with 1 washer and 1 dryer

There are 3 video monitors (SR, SL and in the Green Room) with a CCTV feed from the stage and audio monitors/stage manager feed throughout the entire back stage area There is wireless internet available in the backstage areas

Crossover is upstage of the cyc or through the large Green Room

The stage is a sprung wooden floor suitable for dancing, with black Marley available

There is a red dancer's spotter light in the center of the balcony rail, visible from the stage

Lighting

All instruments fitted with Stage Pin Connectors.

Ellipsoidal Instruments (575W lamps)

[16- 19° ETC Source 4 Full Size](#)

[1- 26° ETC Source 4 Full Size](#)

[15- 26° ETC Source 4 Junior](#)

[36- 36° ETC Source 4 Junior](#)

[12- 50° ETC Source 4 Junior](#)

Notes:

Source 4 Juniors take "M" size gobos (2-1/2"), the barrels do not turn nor can they be swapped.

Source 4 Full Size instruments take "A" size gobos (3- 3/16").

Wash Instruments

35- [Source 4 PAR EA](#) (575W lamps)

Very Narrow, Narrow, Medium and Wide Lenses for all PARs.

Cyclorama Instruments (750W lamps)

9- [Altman 3 Cell Cyc](#) with feed through. Gel size is 13" high x 8-3/4" wide.

6- 3 Cell Cyc Runts. Gel size is 7-1/2" high x 8-3/4" wide.

Followspot Accessories (using 2- 19° Source 4 Full Size on swivel stands on the Catwalk)

2- Drop-in 6 color Boomerang [City Theatrical #1410](#). One slot is used for blackout.

Booms/ Mounts

6- 2' x 2' flat boom bases

6- 1-1/2" x 10' boom pipes

12- Floor Mounts

Lighting Accessories

28- Barn Doors for PARs

10- Donuts (fit all Ellipsoidals)

12- Half Hats (fit all Ellipsoidals)

2- Iris (fit Full Size Ellipsoidals only) Currently used in followspots.

Large assortment of gel from Rosco, Lee, GAM.

Large assortment of templates (gobos) in "A" and "M" sizes.

7- Size "A" (3-3/16") Template Holders

18- Size "M" (2-1/2") Junior Template Holders

4- Size "M" (2-1/2") Junior Glass Template Holder

Assortment of DMX, RG58, VGA and other cables and adapters

6- Edison Male to Stage Pin Female adapters

6- Stage Pin Male to Edison Female adapters

8- Two-fers

6- Three-fers

Lighting Control

[ETC Express 250 Lighting Console](#)

24 Submaster Sliders with 10 pages of memory

250 Channels

2 DMX universes to control up to 1024 Dimmers/ Attributes

Remote Focus Unit onstage

ETC Sensor+ Dimmer Racks with 162 D20 2.4k dimmers

ETC Unison Architectural Control

Circuit Plot

House is dimmer per circuit

Circuit	Location
1-20	FOH Catwalk
21, 23, 25, 27, 29, 31	HL Box Boom
22, 24, 26, 28, 30, 36	HR Box Boom
32, 33, 34	Balcony Rail
38, 40, 42	UC Stage Wall
39, 41	MSL Stage Wall
43, 45, 47	USR Stage Wall
44, 46, 48	USL Stage Wall
49 – 64	First Electric
65 – 80	Second Electric
81 – 96	Third Electric
97 – 102	SOCO, DSL
103 - 108	SOCO, MSL
109 – 114	SOCO, DSR
115 – 120	SOCO, MSR
121 – 126	SOCO, USL
127 – 132	SOCO, USR
133 – 138	SOCO, FOH Catwalk
139 – 144	Balcony Rail
193	House Lights, Front Orchestra
195	House Lights, Middle Balcony
199	House Lights, Middle Orchestra
201	House Lights, Rear Balcony
205	House Lights, Rear Orchestra
207	House Lights, Under Balcony
211	House Lights, Front Balcony
213	House Lights, Wall Sconces and Aisles
215	House Lights, Rear Steps

House Repertory Plot is available upon request.

Sound

The system is Mono due to the size of the hall. It can be configured for Stereo with advance notice.

For basic events we provide 2 stage monitor mixes with individual EQ from FOH. More can be available from FOH and/or Monitor World with advance notice.

FOH mixing position is located in the last row of the house, approximately 65' from the stage, under the balcony.

3-phase power distro tie-in is available on both stage right and left; 60 amps SR and 200 amps SL

FOH Mixing Position

Midas M32 Digital 40 Channels. 32 Midas Preamps, 25 Mix buses, 25 Midas Pro Motorized Faders. 50 built in effects, 7" TFT Display and 32 channel, 48kHz USB 2.0 audio interface. House snake uses channels 1-24. Channels 25-32 are available for additional inputs.

1- **Midas DL32** 32in/16 out stage box with 32 Midas microphone preamplifiers, Ulatranet Ethernet compatibility and ADAT digital connectivity

1- **Lexicon MPX550 Dual Channel Processor**

1- **Ashly GOX-3102 Stereo 31 Band EQ** for Mains

2- **Ashly GOX-3102 Stereo 31 Band EQ** for 2 basic stage monitor mixes

1- **PreSonus ACP-88 8-Channel Compressor/ Gates**

1- **Production Intercom MS 200 Sub-Station** (Headset system)

1- **Numark MP103 USB MP3 and CD player with USB**

1- **Denon C615 CD Player**

1- **Sony MDS-JE510 MiniDisc Player/ Recorder**

1- **Sony PCM R300 DAT Player/ Recorder**

1- **Yamaha BD-A1060 Blu Ray player**

Monitor World (Stage Right)

1- **Mackie 24x8 Console**

1- **Whirlwind IMP 1x2 Splitter**

1- **Rapco 100', 16 channel Subsnake**

Assorted adapters, turn-arounds and cables in XLR, 1/4" and 1/8" Phono, RCA and Speakon

Assorted quad boxes/ power strips

Rack in Control Booth

1- **Biamp Nexia SP** System Processor – (NO Adjustments permitted)

1- **Rane MLM82 Mic/Line mixer**

1- **C audio 4x300 300W @ 4 Ohm** 4-Channel Amp powering the Balcony and Under balcony Speakers

1- **Crown CTs 2000 2 x 1000W @ 4 Ohm** powering the Subwoofers

- 1- **C audio 2x1100 1100w @ 4 Ohm** powering the basic stage monitor mixes
- 1- **TOA A-906MK2 60W RMS Mixer/Amp** controls the Lobby feed
- 1- **Ashly MX206 Stereo Mixer** powering the Assisted Listening Device System
- 1- **Williams Sound Assisted Listening Device Transmitter**
- 1- **Production Intercom MS 200 Master Station** (Headset system)

Speakers

- 5- **D.A.S. Variant 112A Powered Line Array** (Mains, flown center of house at the proscenium)
- 2- **JBL Marquis Series low frequency Speaker 2x15" 700W** (Subwoofers on main floor in front of Apron)
- 2- **JBL EON 10G2 powered speaker** (Front fills placed on top of Subwoofers)
- 2- **JBL Marquis Series speaker 2-way full range 100x70° 150W** (Under balcony)
- 2- **JBL SP219-9 2-way full range 90° Speaker Cabinets** (Balcony)
- 4- **JBL MR Series 2-way Stage Monitors**

Other Equipment Available

- 1- **Phillips AZ1305 Portable CD stereo** (boombox)
- 1- **Toshiba SD-6100 DVD Player**
- 1- **Philips DVP 3960/37 DVD Player**
- 1- **Dell Latitude E 5530 Laptop**
- 1- **Eiki EIP-HDT30 Projector** (mounted on the balcony rail)

Mics/ DI

- 2- **Shure SM 27** Multi-Purpose Microphones
- 1- **Shure Beta 52A** Kick Drum Microphone
- 4- **Shure Beta 58A** Vocal Microphones
- 4- **Shure SM 58** Vocal Microphones
- 4- **Shure SM 57** Instrument Microphones
- 1- **Shure UC1-UA** Wireless RF Lavalier Microphone
- 2- **AKG P170** Condenser Microphones
- 1- **Whirlwind HotBox Active Reference DI**
- 3- **Whirlwind IMP 2 Passive DI**

Mic/ Other Stands

- 4- Table
- 2- Small
- 3- Tall round base
- 15- Tall tripod base
- 10- Long boom arms
- 5- Short boom arms
- 5- Guitar stands

Intercom System

- 6- **Production Intercom BP-1 belt pack** and **SMH210 headset**

(feeds in the Booth, FOH mixing position, Followspots, Fly Rail, DSR, DSL and the tech table)

- 1- **TELEX RadioCom BTR-700** Single-Channel UHF Synthesized Wireless Intercom System
- 4- **TELEX TE-700 UHF** Single-Channel Wireless Transceiver with A4M Headset Connector
(2- single muff headsets and 2- double muff headsets)

Dance Studio Sound System

- 1- **Soundcraft Spirit M12** Console
- 2- **Crown CTS-600** amps
- 1- **Rane AC-22S** active crossover
- 2- **Rh** 2-way full-range speakers
- 1- **Marantz PMD 350** cassette/ CD Combo

Backline Gear

Piano:

- 1- **9' Steinway Concert D** Grand Piano
- 1- **6' Bechstein** Baby Grand Piano

Bass Gear:

- 1- **Gallien-Krueger 410 BLX-II** Speaker
- 1- **Gallien-Krueger 250 BL** Head

NO Instrument cable available, please provide your own

Guitar Gear:

- 1- **Roland Jazz Chorus JC-120** Amp

NO Instrument cable available, please provide your own

Ludwig Drum Kit:

- 22" Kick (Aquarian Regulator Front, Ludwig Weathermaster Head)
- 18" Kick (Aquarian Response 2 Front, Ludwig Weathermaster Head)
- 12" Tom (REMO Weatherking Coated Ambassador Head, REMO Weatherking Ambassador Bottom)
- 13" Tom (REMO Weatherking Coated Ambassador Head, REMO Weatherking Ambassador Bottom)
- 14" Floor Tom (REMO Weatherking Coated Ambassador Head, Ludwig Weathermaster Heavy Bottom)
- 16" Floor Tom (REMO Weatherking Coated Ambassador Head, REMO Weatherking Ambassador Bottom)
- 14" Snare (REMO Weatherking Coated Ambassador Head, Ludwig Weathermaster Bottom)

Other Heads Available:

- 14" Ludwig Weathermaster Medium Coated Ambassador
- 14" REMO Weatherking Ambassador Snare
- 14" Ludwig Weathermaster Heavy
- 22" Ludwig Weathermaster
- 18" Ludwig Weathermaster

Orchestra/ Marching Band Bass Drum:

- 2- Ludwig 28" Bass Drums
- 28" Bass Drum REMO Weatherking Pinstripe Bass Head

Cymbals – Sabian B8

- 14" Hi-Hat set
- 16" Thin Crash
- 20" Ride

Hardware:

- 2- Boomed Cymbal Stands
- 1- Non-Boomed Cymbal Stand
- 1- Hi-Hat Stand
- 1- Cymbal Stand arm
- 6- Floor Tom Legs (3 Per Floor Tom)
- 1- Snare Stand
- 1- Single Action Kick Pedal

1- Kick Drum Head with Tom Rack

1- Toy Clamp

1- Throne

Stage Equipment

6- 4' x 8' Wenger platforms with 8" or 16" leg height, skirted or not

1- 3' x 3' x 5" high Conductor's platform

1- Wooden full-height podium with extending side shelf either side

Assorted 6' x 9' or 8' x 10' rugs

Full-stage black Marley

80- Padded folding chairs- dark red fabric

18- Padded non-folding chairs- dark red fabric

44- Black Wenger music stands

15- Music stand lights

Assorted clip lights and Little Lites are available where required

2- 4' adjustable height tables

6- 6' tables

2- 8' tables

1- tech table is available to place in the center of the house for rehearsals

We currently use the cyc as a projection screen

Soft Goods Inventory

Red Velour Valance and Main Curtain/ Fire Curtain (travels open)

4- 4' x 28' Black Borders, flat, no fullness

12- 4' x 22' Black Legs, flat, no fullness

2- Sets of Black Travelers, flat, no fullness

1- Full Stage Black, flat, no fullness with center slit

1- 28' wide x 20' high White Poly Cyc

1- 28' wide x 20' high Black Sharkstooth Scrim

Rigging and Stage

Rigging is a mixture of JR Clancy Scene Control motorized battens, single-purchase counterweight arbors and dead hung pipes. NO ADDITIONAL RIGGING POINTS AVAILABLE

LINE SET	ITEM	TYPE	FROM P. L.	PIPE TRIM
1	Valance	Dead Hung	0'- 3"	22'- 6"
2	Main Drape	Dead Hung	0'- 9"	22'- 6"
3	1 st Electric	Motorized	3'- 11"	24'- 6"
4	Spare	Dead Hung	5'- 5"	22'- 6"
5	Black Border	Motorized	6'- 5"	22'- 6"
6	Spare	Dead Hung	7'- 5"	22'- 6"
7	Black Traveler/ Legs	Dead Hung	8'- 5"	22'- 6"
8	2 nd Electric	Motorized	9'- 5"	24'- 6"
9	Spare	Dead Hung	10'- 5"	22'- 6"
10	Black Border	Motorized	11'- 5"	22'- 6"
11	Spare	Dead Hung	12'- 5"	22'- 6"
12	Spare	Dead Hung	13'- 5"	22'- 6"
13	Black Traveler/ Legs	Dead Hung	15'- 0"	22'- 6"
14	Black Border	Counterweight	16'-0"	22'- 6"
15	3rd Electric	Counterweight	17'- 5"	24'- 6"
16	Full Stage Black	Counterweight	19'- 5"	22'- 6"
17	Black Scrim/ Legs	Counterweight	20'- 0"	20'- 6"
18	Cyc Electric	Counterweight	21'- 5"	24'- 6"
19	Spare	Dead Hung	22'-0"	22'- 6"
20	White Cyc	Counterweight	22'- 5"	20'- 6"

The grid is 36'- 6" above the deck

Batten travel is from 4'- 6" above the deck to 36'- 0" above the deck.

A scenic drop 18'- 0" high can be flown out of sight lines with border pipes trimmed at 21'- 6".

Stage Configuration and Dimensions

Proscenium is 28'- 11" wide x 20'- 0" high

Bottom of valance is 17'- 8" from the deck

Main Curtain opening is 22'- 7" wide

Stage house and floor is 32'-0" wide x 29'- 0" deep

Useable stage space is 28'- 6" wide due to pilasters on the side walls and only 22'- 0" wide with soft goods in place

The apron extends 2'- 0" downstage of the plaster line at the center line and 1'- 2" at the proscenium wall

There are removable steps from the stage to the house on SR and SL

The rear stage wall is 27'- 0" from the plaster line

The cyc hangs on the last lineset upstage at 22'- 5" from the plaster line

Stage loading door SR is auto-drop fire rated roll-up door at 6'- 0" wide x 12'- 0" high

Stage loading door SL is hinged fire rated door at 5'- 4" wide x 12'- 0" high

The JR Clancy Scene Control Panel for the motorized battens is in the stage right wing

The fly rail is located up stage right. There is no loading rail

All travelers are operated from stage right

Miscellaneous

2- AED/CPR units, wall-mounted; 1 in the large Green Room and 1 in the middle lobby

1- Clothes washer

1- Clothes dryer

1- Fabric/ costume steamer

1- Iron

3- Ironing boards

1- Singer sewing machine

3- Electric space heaters

1- Box fan

Assorted bath towels and hand towels in white and black

1- Refrigerator for show use

1- Refrigerator for House crew

1- Range for show use

1- Microwave for show use

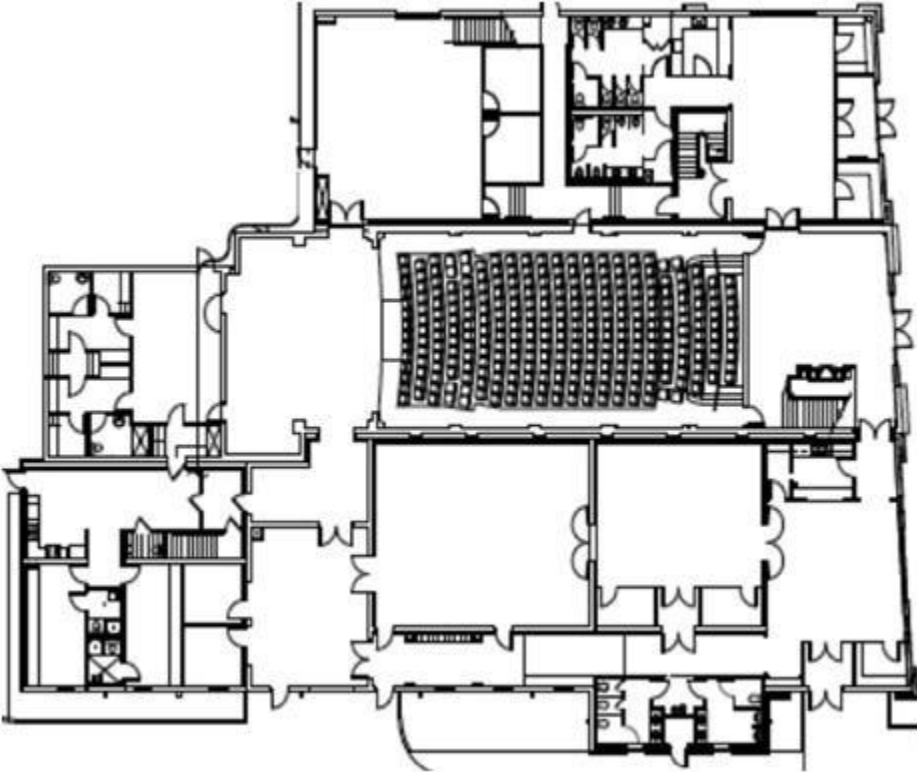
1- Drip coffee maker

Kitchen stocked with assorted cooking and dining items- pots, pans, plates, glasses and utensils

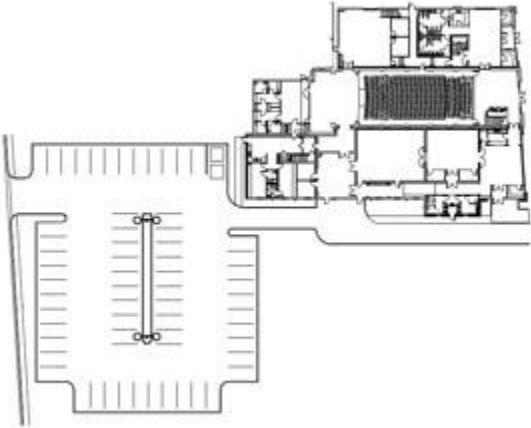
Assortment of paper plates, bowls, napkins, tissues, etc.

The American Theatre

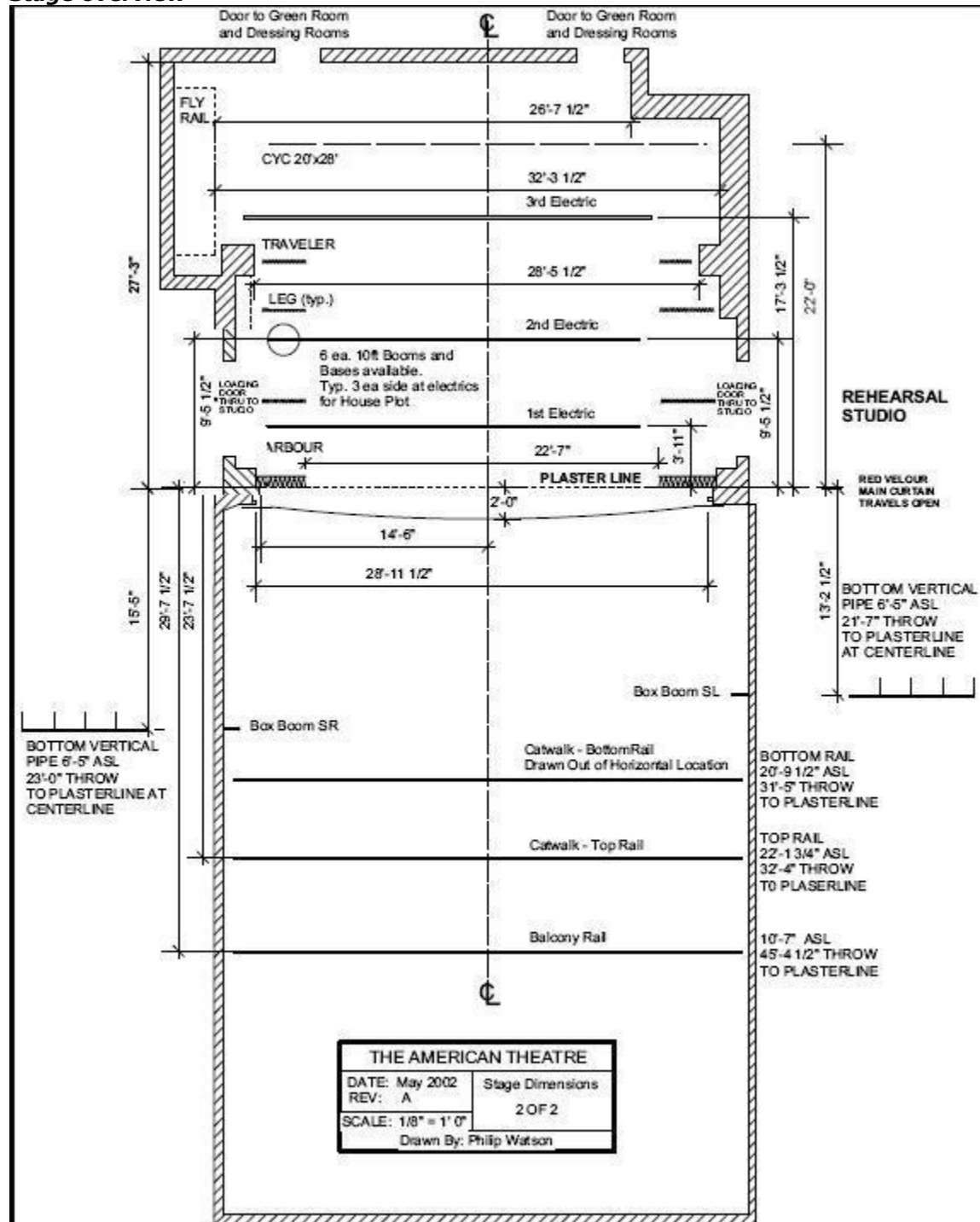
Building overview



Lot Overview

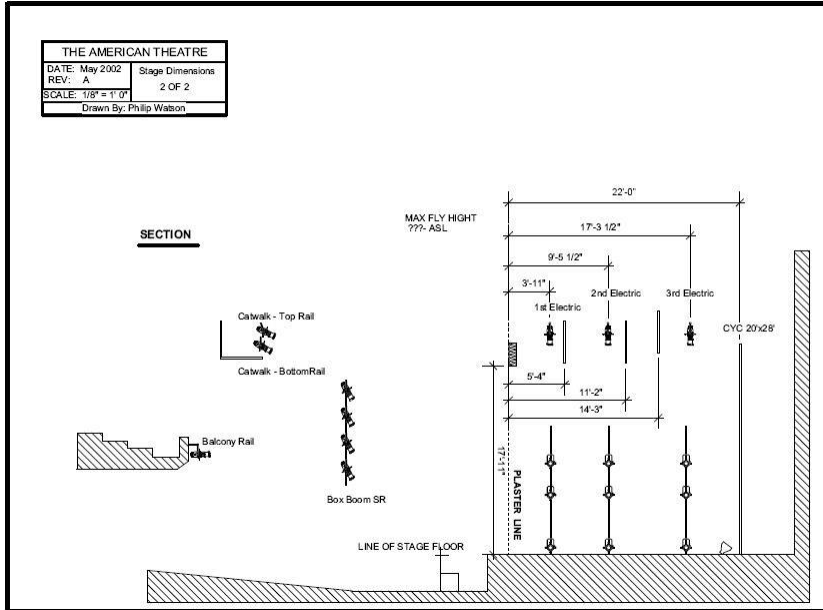


Stage overview



THE AMERICAN THEATRE	
DATE: May 2002	Stage Dimensions
REV: A	2 OF 2
SCALE: 1/8" = 1' 0"	
Drawn By: Philip Watson	

Stage section view



Auditorium section

